

SoundEar[®]

Noise Warning Sign

- * Attractive design for any room or office
- * Trigger level 40 to 115 dB(A) in 5 dB Steps
- * Yellow warning just before limit reached
- * Red light and the word "WARNING" when limit exceeded

APPLICATIONS

* Hospitals

- * Reminder to staff & visitors
- * Improved patient experience

* Place of work

- * Factories
- * Office and open plan areas

* Schools

- * Study rooms and class rooms
- * Cafeteria

* Entertainment Venues

- * Concert halls
- * Clubs, nightclubs



Keep an ear on the noise level!

SoundEar[®] - Keeping an ear on the noise level!

Noise has become a nuisance to more and more people - but you don't have to put up with uncomfortable and detrimental noise levels with the risk of hearing damage any longer. SoundEar gives you the ultimate noise abatement tool.

The SoundEar noise warning sign presents a clear and unmistakable warning as soon as the noise exceeds the limit. Children and adults can easily understand the warning symbol so that immediate action can be taken.

You can adjust the noise limit on the device to suit the function of the room.

SoundEar's elegant and effective design fits in anywhere, and its user friendliness is superb.



SoundEar

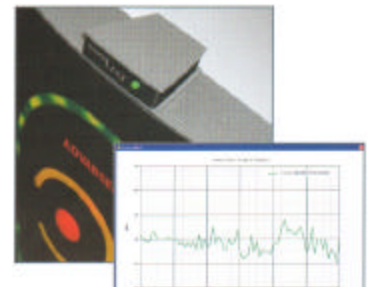
This noise warning sign presents a hard-to-miss warning (red light and the word WARNING) as soon as the noise limit is exceeded. The noise limit can easily be set to between 40 and 115 dB(A) in 5 dB steps by turning the knob on the back of the sign. These settings represent all the usual noise levels between study rooms and rock concerts.

SoundEar is well suited to all those who require a flexible noise limit setting.

SoundLog

While the SoundEar measures the sound and displays warnings, SoundLog stores the levels for later analysis.

Using the software provided, you can see how the level varies at different times of the day and check that in your absence the limits have not been exceeded.



Technical Data

Threshold Tolerance:	+/- 1dB	Dimensions:	11" x 11" x 2.3"
Power Supply:	Adapter supplied		280 x 280 x 60 mm
Power Consumption:	approx. 3W	Weight:	53 ounces 1.5 kg

Onsitetools Ltd

Tel: 0845 638 1314 ~ Fax: 01425 652772

email: info@onsitertools.com

www.onsitertools.com